

SHARP

Sharp EPOS Solutions
Hardware and Software



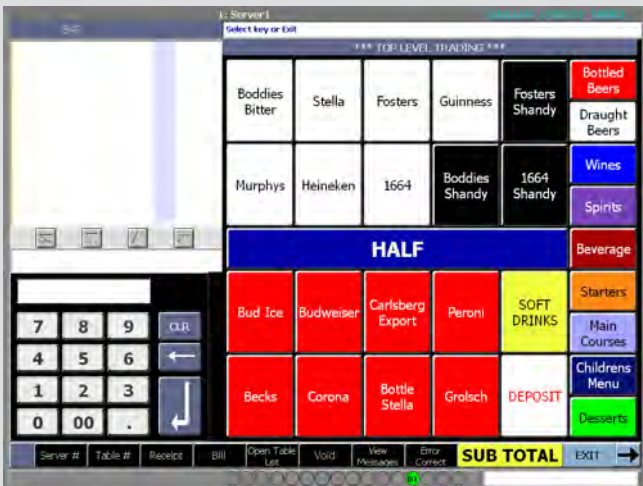
Sharp have been producing high quality Electronic Point of Sale equipment for over 30 years /This is Why we are a trusted brand for any retail and hospitality business

cefnogaeth TG

telemat
IT support

SHARP POS SOFTWARE

Any busy retail or hospitality business requires sophisticated and intuitive software /This is Why Sharp POS Software has been designed to be feature rich yet very easy to use



CLEAR AND EASY TO USE USER INTERFACE

Based on over 15 years of PC based expertise and know-how, Sharp POS Software is an easy to use and easy to administer front end application software package suitable for hospitality and retail environments of any size, from a single site to a large chain.

With a clean and intuitive Graphical User Interface, Sharp POS Software utilises an industry standard SQL database structure in order to manage quick and responsive data processing whilst providing accurate results every time.

The supplied Sharp POS Manager programme is easy to use and helps you stay in control of how you manage the configurations of your POS set-up, this is one of the reasons why Sharp POS Software is the front end application of choice for countless hospitality and retail outlets.

PRODUCT HIGHLIGHTS

Feature Rich and Easy to Use

- Robust and Reliable
- Quick data processing thanks to the SQL database
- Clear, visual button layouts
- Intuitive fully configurable User Interface
- Time and Attendance module included
- Full Table Management with floor plans, bill separation and bill transfer functions
- Promotional features for more sales
- Fully Configurable screens for enhanced flexibility
- A comprehensive reporting menu for management control
- Expandability with links to third party hotel Property Management System Software
- Flexible Deposit features to maximise all sales opportunities
- Product pricing and descriptions can be altered quickly and easily within Sharp POS software to save time.

EASY TO VIEW AND FLEXIBLE MENUS

CROISSANTS	 PORRIDGE	WELSH RAREBIT
TEA CAKE	MUESLI	BOILED EGG
MUFFIN	DRINKS	SCRAMBLED EGGS
HOT CROSS BUN		Pancakes

IMAGES CAN BE ASSIGNED TO PRODUCT BUTTONS TO IMPROVE SPEED OF SERVICE AND TO MINI-

Sharp POS Payment	
Amount Due:	31.57
Change:	0.43

CLEAR PAYMENT SCREEN TO AVOID MISTAKES

Through the supplied Sharp POS Manager programme, it is quick and easy to customize the layout and design of any screen allowing utmost flexibility.

Sharp POS Manager also allows for the screens to be configured to suit users depending on the type of environment. The software is flexible enough to allow for the transaction area to be positioned left or right for convenience. To help reduce mistakes and increase server awareness, buttons can also be overlaid with an image file.

At a glance:

- Adjust the layout of any button.
- Customise the foreground colour and background colour,
- Specify the font size of any button.
- Adjust the positioning of button text: top, middle or bottom.
- Easy to format menus for laying out each individual screen
- Large Payment screen option to help minimize staff mistakes.
- Add images to buttons to identify products and minimize server booking errors

FLEXIBLE AND SECURE SIGN ON METHODS



To suit a wide variety of different retail and hospitality environments, Sharp POS Software allows various methods for server and manager sign on.

To allow for quick customer service in a busy bar or restaurant, on screen server buttons can be allocated to the logged off screen for fast server sign on.

Sharp POS Software supports the following secure sign on methods:

- Magnetic card
- Dallas key (iButton)
- On screen buttons (passwords can be set for security)
- Contactless card (MiFare) / Biometrics

MULTIPLE SERVER SIGN-ON METHODS TO SUIT A WIDE VARIETY OF DIFFERENT ENVIRONMENTS

FULL TABLE MANAGEMENT FUNCTIONALITY



ACTIVE TABLE SCREENS TO SHOW THE STATUS OF EACH PARTICULAR TABLE:

MAKES IT EASY FOR SERVERS TO MANAGE A LARGE PUB/RESTAURANT DINING AREA

The advanced table management features within Sharp POS software makes running any restaurant, pub or café operation so much simpler and easier.

Tables can be laid out to match the layout of the property and the graphical user interface makes it easy to manage a large dining area as clerks can click straight in to a table from the front screen.

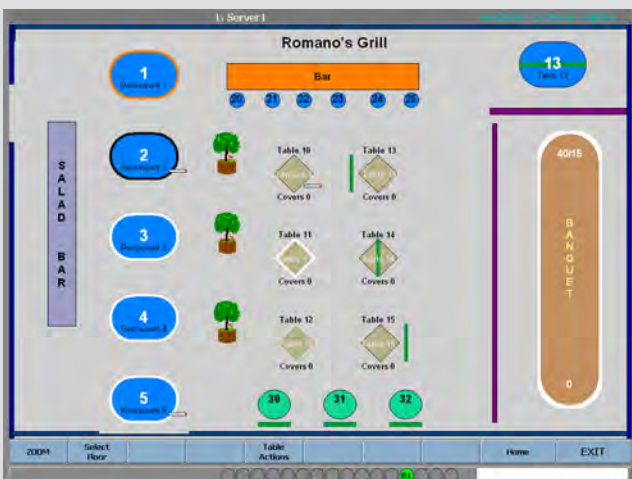
To allow for improved table information, different colours can be set to show the different table status. For additional staff information, text showing the current table status is printed within each active table window.

For example:

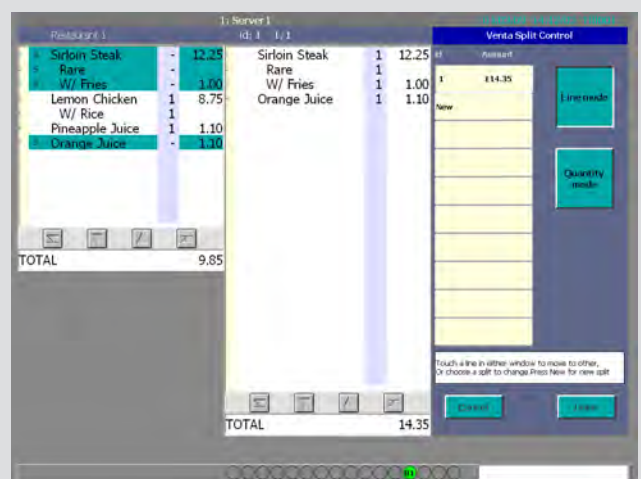
- GREY = Unused Table
- ORANGE = Starters ordered
- YELLOW = Mains ordered

At a glance:

- Avoid confusion
- Easy to use graphical layout which can be programmed to suit most operations
- Open a table just by clicking on it.
- Book items direct to tables just by clicking on the active table



VIEW FLOOR PLAN AT A GLANCE AND ACCESS CUSTOMER TABLE INFORMATION QUICKLY WITH ONE PRESS.



INTUITIVE BILL SEPARATION SCREEN ALLOWS QUICK CUSTOMER SERVICE AND HELPS TO REDUCE OPERATOR MISTAKES

ORDER BY SEAT

```

Order No:38
=====
12/10/11 14:37:40
001 Till 1
01 Andrew
*****
01 Restaurant 1
*****
===== Starter =====
Seat 1
1 S&P Ribs
Seat 2
1 BBQ Ribs
Seat 3
1 O.K Ribs
Seat 4
1 S&P Ribs
Seat 5
1 S&P Ribs
Total Starter 5
===== Main =====
Seat 1
1 Fusilli tart
Seat 2
1 Paella
Seat 3
1 Paella
Seat 4
1 Fusilli tart
Seat 5
1 Med Chicken
Total Main 5
=====
TOTAL ITEMS 10
TOTAL COVERS 5
=====
    
```

Restaurant 1	Seat 1		
D/Fried Squid	1	4.50	
Sirloin Steak	1	12.25	
Blue	1		
W/ Potatoes	1		

```

=====
28/02/11 12:14:58
001 Till 1
01 Server1
*****
01 Restaurant 1
*****
** table items **
===== Drinks =====
1 BT Red Wine
** Seat 1 **
===== Starter =====
1 D/Fried Squid
** Seat 2 **
===== Main =====
1 Sirloin Steak
1 Blue
1 W/ Potatoes
** Seat 3 **
===== Starter =====
1 M/Chicken Lettuce
** Seat 4 **
===== Main =====
1 Sirloin Steak
1 Medium-Well
1 W/ Potatoes
=====
TOTAL ITEMS 5
=====
    
```

IDEAL FOR FINE DINING AND PUB WITH FOOD ENVIRONMENTS

A useful feature which tracks orders directly to specific seating plans. To help reduce mistakes and to ensure accurate service the kitchen printing slip will clearly show which items are assigned to which specific seat number.

At a glance:

- Helps staff deliver food and drink items directly to diners
- Useful for quick and professional service in busy dining rooms
- Fully itemized bill to help with bill splitting
- Items for the whole table can be displayed on the server's printout to indicate that this is a 'Table Item' (e.g. a bottle of wine or mineral water)
- Condiments are also displayed by seat to avoid confusion

CLEAR ORDER BY SEAT CHECKLISTS CAN BE PRINTED FOR ACCURATE TABLE SERVICE

KITCHEN INSTRUCTIONS / FREE TEXT

BAR		
Ham Sandwich	1	3.05
NO ONION	1	

```

=====
08/10/10 13:47:07
001 Till 1
01 Server1
*****
Till 1
*****
== Starter ==
1 Ham Sandwich
1 NO ONION
=====
TOTAL ITEMS 2
=====
    
```

```

00100047 TERM 1 08/10/10 13:55:17
SERVER 1 : Server1

== Starter ==
1 Ham Sandwich          3.05
1 NO ONION              0.00
-----
TOTAL FOOD              £3.05
-----
TOTAL DUE               £3.05

TENDER ANALYSIS
Cash                    £3.05

VAT A 15.00% on £3.05  £0.40
VAT                    TOTAL  £0.40

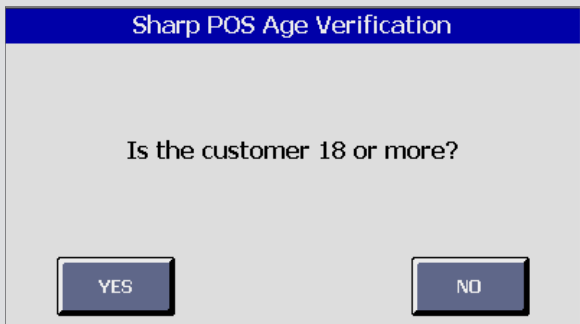
VAT NO. 123456789012345
    
```

For kitchen orders which have special instructions, a large easy to use pop-up QWERTY keyboard allows for free text to be entered. This feature helps with any special food orders and helps to avoid any potentially costly food preparation errors.

- There is the option for kitchen instructions and/or free text to be printed on the receipt and KP slip
- The free text on the KP slip will appear in red to ensure that kitchen staff do not miss it.
- Helps kitchen prepare orders and avoids wastage

KITCHEN TEXT IS PRINTED CLEARLY FOR NO CONFUSION AND TO AVOID MISTAKES

AGE VERIFICATION



MANAGE SALES OF RESTRICTED ITEMS
(TOBACCO; FIREWORKS; ALCOHOL)

COMPLY WITH LEGISLATION ON RESTRICTED PRODUCTS

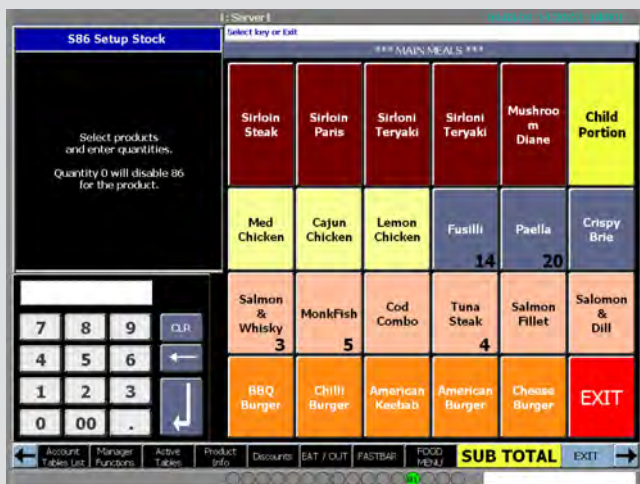
To ensure that servers take responsibility for verifying the age of customer when selling restricted items (Alcohol, tobacco or fireworks), on screen dialogue boxes can be set to appear when pre-set items are sold.

Not only is this for the benefit of the server but Sharp POS Software can also show the number of prompts shown and refusals in the server report.

To ensure quick operation, once an age prompt is shown and the customer's age is confirmed, further age verification prompts are not shown when subsequent items are sold.

This is a useful feature for all hospitality or retail outlets that sell alcohol and/or tobacco because it puts the responsibility for verifying a customer's age in the hands of the servers.

STOCK COUNTDOWN



STOCK LEVELS CAN BE PRESET AND COUNTDOWN OF STOCK IS DISPLAYED CLEARLY ON EACH PRODUCT BUTTON

ACCURATE STOCK INFORMATION AT A GLANCE

The useful stock countdown feature is a feature developed for wherever food is served as it allows for the exact number of portions available to be clearly displayed on each product button. This removes any potential customer disappointment if any products are oversold and also allows all servers to be aware of what the remaining stock levels of each dish are.

At a glance:

- Stock levels are displayed on screen: communicates the current stock situation clearly to all servers
- Avoids overselling of sold out items
- Allows staff to focus on selling slower moving dishes.

DEPOSITS

Name	Date/Time	Amount	Status	ID
MR BENNETT	04/03/2009 20:50	50.00	confirmed	25
MR RAMSEY	04/03/2009 20:55	150.00	confirmed	26
MR SMITH	04/03/2009 20:51	150.00	confirmed	23
MRS EVANS	04/03/2009 20:55	50.00	confirmed	24

DEPOSITS AND BOOKING SCREENS ARE CLEARLY LAID OUT TO REDUCE MISTAKES

PRE-SELL AND MAXIMISE TAKINGS

Sharp POS Software also has a facility to take deposits or to make bookings for future transactions. Both these features can either be used independently or together. The deposits function allows for pre-payment to be taken for an upcoming function and a receipt is printed with a barcode to make it easy for both the customer and the clerk to redeem at a later date. With the Sharp POS booking manager feature, a future booking can be made with a date, time and location specified.

At a glance:

- Easy to enter customer deposits
- Receipts print to avoid confusion and a barcode is printed to allow for easy redemption.
- Flexible payment: Partial / full payment of a bill from a deposit is allowed
- Clear Management Information: a report on outstanding deposits can be printed.

TRANSACTION HISTORY

Amount	Table	Server	Payment	VBP REF
663.45	0	1	1	
692.00	0	1	1	
622.25	0	1	1	
16.30	0	1	1	
115.00	0	1	1	
622.80	0	1	1	
68.75	2	1	1	
17.20	2	1	1	
631.20	10	1	1	
618.00	0	5	1	
618.40	0	1	1	

FULL VISIBILITY OF PREVIOUS TRANSACTIONS

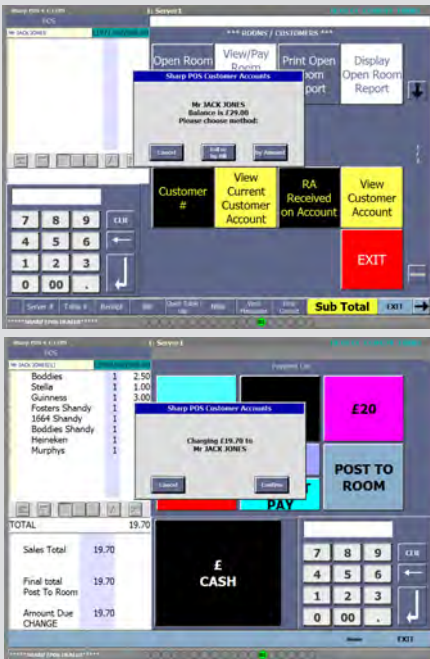
Through the Sharp POS Utility menu, you can view the full transaction history of any customer which is useful for a full audit trail.

The transaction history feature allows any operator to select past transactions which can then be opened and if required a copy of the receipt can be issued.

At a glance:

- Search and view transactions which happened up to 50 days ago
- Flexible access from Utilities menu or via an on screen button from main trading screen
- Transaction history can be backed up automatically as part of the end of day routine for peace of mind
- Save time searching the transaction history file and search by field (Date; Time; Transaction number; Server; Table number or payment type)

CUSTOMER ACCOUNTS



```

*****SHARP EPDS DEALER*****
Sharp POS Software
TOSUCH TECHNOLOGY
1 CUSTOMER BILL 18/10/13 13:07:19

Mr JACK JONES
18.10.13 13:04:53
SERVER Server1

==== DRINKS ====
1 Bottles 2.50
1 Stella 1.00
1 Guinness 3.00
1 Fosters Shandy 2.90
1 1664 Shandy 2.60
1 Bottles Shandy 2.60
1 Heineken 2.80
1 Murphy's 2.10
18.10.13 CHARGE TOTAL Drink £19.70

18.10.13 13:05:27
SERVER Server1

==== DRINKS ====
1 Bottles 2.50
1 Stella 1.00
1 Fosters 2.90
1 Guinness 3.00
18.10.13 CHARGE TOTAL Drink £9.30

AMOUNT DUE £29.00

Signature:
    
```

The Sharp POS Customer accounts features offers the possibility of charging bills to an account to be settled at a later time.

Receipts are printed for every transaction that is charged to a customer account with a signature line for the customer's confirmation in order to reduce any ambiguity or disputes at a later date.

Statement is itemised with date and time against each transaction for a full audit trail.

From within the Customer Accounts screen one button click brings up all the customer's account details and using the Received on Account function, customers can pay off any outstanding balances either in part or in full.

CUSTOMER ACCOUNTS ALLOWS A FULL RECORD OF BALANCES AND PAYMENTS

COMPREHENSIVE REPORTING FEATURES

Sharp POS Viewer			
Day 5	Department Sales Report		
03/09/10 16:02:41	Serial No : 0002		
Store Number : 0001	Terminal No 001		
No.	Department	Qty	Sales
1	BREAKFAST	230.33	528.65
2	MAIN MEALS	15.00	40.30
3	SANDWICHES/BAQHE	2.00	5.30
9	PASTA	20.00	24.00
8	Department 8	7.00	80.50
11	DRINKS HOT	1.00	12.25
41	DRINKS HOT	6.00	13.50
Total		281.33	734.50
Last Department Sales Printed			
03/09/10 16:02:41		Serial No : 0001	

Sharp POS Viewer			
Period 1	Period Department Sales		
03/09/10 16:05:30	Serial No : 0002		
Store Number : 0001	Terminal No 001		
No.	Department	Qty	Sales
1	BREAKFAST	485.33	1100.55
2	MAIN MEALS	30.00	68.50
3	SANDWICHES/BAQHE	6.00	13.70
4	SALADS	3.00	3.23
5	PASTA	36.00	59.35
6	FRUIT	1.00	0.30
7	DESSERTS/CAKES	1.00	0.50
8	Department 8	7.00	80.50
10	MISC DRINKS	1.00	3.92
11	DRINKS HOT	2.00	17.10
12	DRINKS COLD	4.00	2.30
20	Canteen Sales	2.00	2.40
21	Canteen Revalnat	10.00	35.70
21	Canteen Revalnat	36.00	90.85
38	Canteen Revalnat	15.00	32.50
41	Canteen Revalnat	6.00	13.50
47	Canteen Revalnat	39.00	109.80
Total		674.33	1712.97

The manager of any hospitality outlet requires access to fully detailed reports in order to keep better management control on product and department sales. Sharp POS Software gives all this functionality either as a convenient on screen view or as a print off to allow more detailed analysis.

To help with analysing any potential discrepancies, Sharp has an extended server report that gives more details of all the discounts, voids and no sales that have been issued by each server.

ON SCREEN DEPARTMENT REPORT IS DISPLAYED IN AN INSTANT

TIME AND ATTENDANCE



A TIME AND ATTENDANCE SYSTEMS THAT IS EASY TO ADMINISTER AND USE

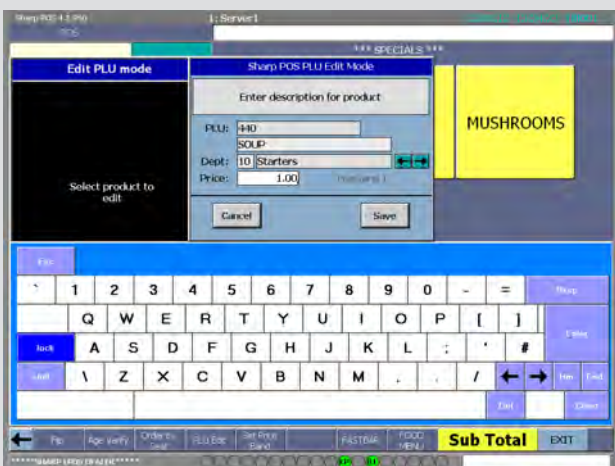
Save time and track your employees accurately with the Time and Attendance module on Sharp POS Software.

Backed with a full reporting function, the time and attendance module helps with the smooth running of a retail or hospitality operation as it puts the onus for logging on in the hands of employees.

At a glance

- Reporting feature gives Managers an accurate summary of actual staff working times
- Flexible period report - Time and attendance can be accessed for a particular time period
- Four fields are recorded in time and attendance mode. (TIME IN; BREAK START; BREAK END; TIME OUT)

EASY PLU EDIT



QUICK AND EASY CHANGES TO ITEMS CAN BE MADE WITH THE POP-UP QWERTY KEYBOARD

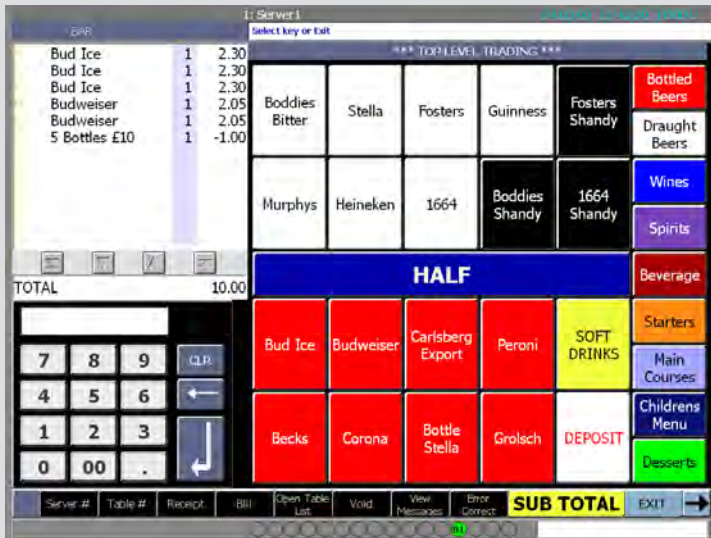
EASY TO MANAGE CHANGING DAILY SPECIALS

To save time in busy hospitality or retail outlets, the PLU edit feature allows for changes to be made directly from the main Sharp POS trading screen. This allows for quick changes without having to switch screens and enter the back office programming menu.

The following item details can be changed:

- Price
- Description
- Key text
- Department

PROMOTIONAL MENUS



FLEXIBLE PROMOTIONAL MENUS TO HELP RETAILERS SELL MORE

SELL MORE THROUGH UPSELLING AND PROMOTIONS

In addition to discounts on individual items, departments or off the sub total of a bill, Sharp POS has a comprehensive set of promotional features which enable sales to be maximized.

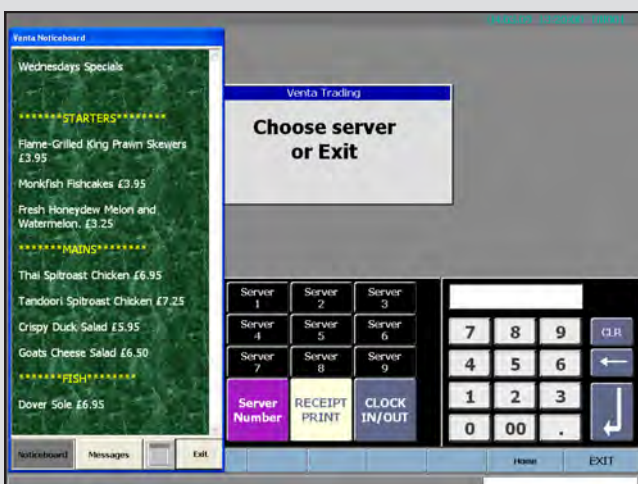
Sharp POS Software features a full set of 'mix and match' promotions which allows for a combination of various attractive product promotions to be set-up.

Flexible product promotions can be set. Examples include:

- Buy 3 items get 1 free
- Meal Deals
- Spend £10.00 and get a 10% discount
- Spend £10.00 and get a £2.00 discount.

For full flexibility the validity period by day and/or time of any mix and match offers can be specified.

NOTICEBOARD FEATURE



NOTICEBOARD FEATURE TO COMMUNICATE SPECIAL OFFERS TO STAFF OR TO SEND MESSAGES

Sharp POS Noticeboard

This is an easy to use yet clear and effective staff information tool whereby a variety of messages can be communicated to all staff and viewed within the Sharp POS front screen. This removes the possibility of any miscommunication with staff members.

- Improve staff information to allow for enhanced customer service.
- Ensure that all servers are notified of important staff information such as 'Today's Specials' or upcoming events.

SHARP POS LOYALTY



FULL INFORMATION ABOUT THE CUSTOMER CAN BE KEPT IN SHARP POS SOFTWARE

Keep track of customer information and their spend. It is possible to set discounts by certain customer groups and reward regular customers for their loyalty. This is an indispensable feature for a members club or a hospitality outlet that wishes to foster better customer retention.

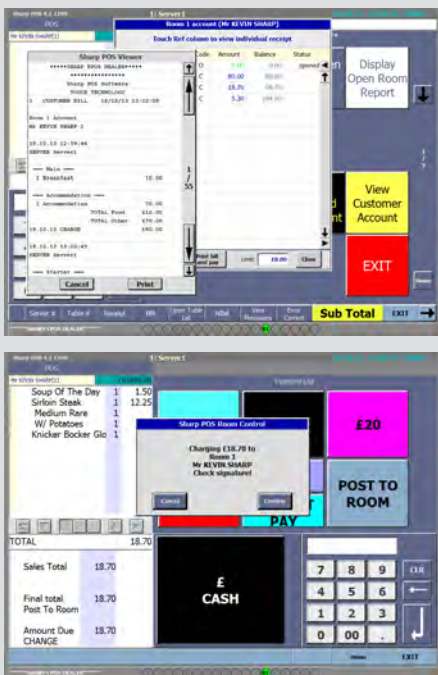
Discounts can be assigned to certain customers depending on their status (e.g. Bronze, Silver, Gold card members)

There are four different methods of entering a loyalty number into Sharp POS Software

- Manual key entry
- Magnetic card swipe
- Barcode scanning
- Biometric finger print

A URL can also be opened from within the Loyalty screen to bring up information if it is stored on a network drive

SHARP POS HOTEL / ROOMS FEATURE



CLEAR SCREENS AND RECEIPTS FOR A FULL RECORD OF ALL ROOM CHARGES



The Sharp POS hotel/rooms feature is a useful feature for smaller hotels or pubs with rooms and enables charges to be posted to a room which can be then settled upon check-out. This is a cost saving feature which means that smaller hotels can save on capital expenditure by doing away with a complicated and expensive property management software system.

At a glance:

- All room charges are listed and can be viewed on screen
- Customer name can be assigned to room as a method of verification
- All room charges and accommodation costs are detailed separately on receipt for clarity

Specifications

Model	RZE601	RZE701
CPU	Intel® Celeron® N3160 Dual Core Fanless	Intel® Pentium® N3710 Dual Core Fanless
HDD	2.5" SATA SSD 64GB	
Memory	4GB DDR3L installed (Max up to 8GB)	
LAN	10/100/1000Mbps Fast Ethernet-T	
Sound	2 x 2W speaker	
Touch Panel Type	True Flat Analog Resistive 5 Wire	True Flat Projected Capacitive
Primary Display	15" TFT XGA 1024x768 TFT LCD, with LED backlight (300cd/m ²); VESA Mounting Support	
Customer Display	Optional 2 line VFD customer display –or- Optional 10.4" LCD customer display	
Dust / Water Resistance	IP65 on front screen / IP31 for rear cover	
Operating System	Microsoft® Windows® 10 IoT Enterprise LTSB (64bits)	
Interface Ports	4 x RJ50 Serial Ports (2 powered +5v / 0.2A)	
	4 x USB Ports (2 x USB 3.0, 5V/0.9A; 2 x USB2.0, 5V/0.5A)	
	1 x LAN Port (RJ45 connector),	
	1 x RJ11 Cash drawer port (conversion cable to SHARP connector available)	
	1 x Stereo Audio jack	
	1 x HDMI	
Operating Temperature	0 - 40°C (Humidity 10-90% RH, non condensing)	
Storage Temperature	-20°C - 60°C (Humidity 10-90% RH, non condensing)	
Dimensions (approx.)	360 (W) x 206 (D) x 340 (H) mm	
Weight (approx.)	6.2kg (with stand)	

Options

Model	Description
RZE1DP1	2 line x 20 digits VFD Customer Display
RZE1DP3	10.4" Colour LCD customer display (VESA 75 mounting)
RZE1MR1	ISO Track I / II / III 3 Track Magnetic Card Reader
RZE1MT1	ISO Track I / II / III 3 Track Magnetic Card Reader / Dallas (iButton reader)
ER05DWB5	Cash Drawer (5 Note and 8 Coin compartments)
L80CITCTS310ii	Citizen CTS310ii thermal receipt printer (RS232C / USB interface)
L80SP742B	Star Micronics SP742B Dot-matrix Kitchen Printer
L80SPOSV4	Sharp POS Software V4
L80SPOSBIO1	Sharp POS Software, Biometrics module for server sign-on/off



SHARP BUSINESS SYSTEMS UK PLC
 4 FURZEGROUND WAY
 STOCKLEY PARK
 UXBRIDGE
 MIDDLESEX, UB11 1EZ